

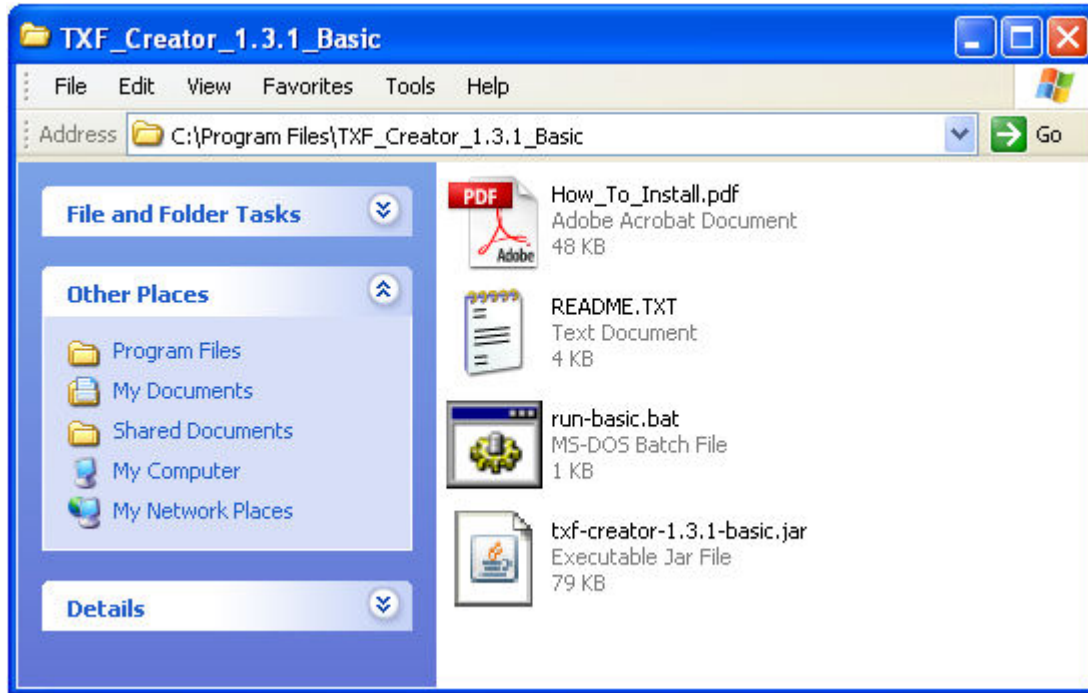
FAQ on TXF Creator 1.3.1

If you encountered the following Java Error:

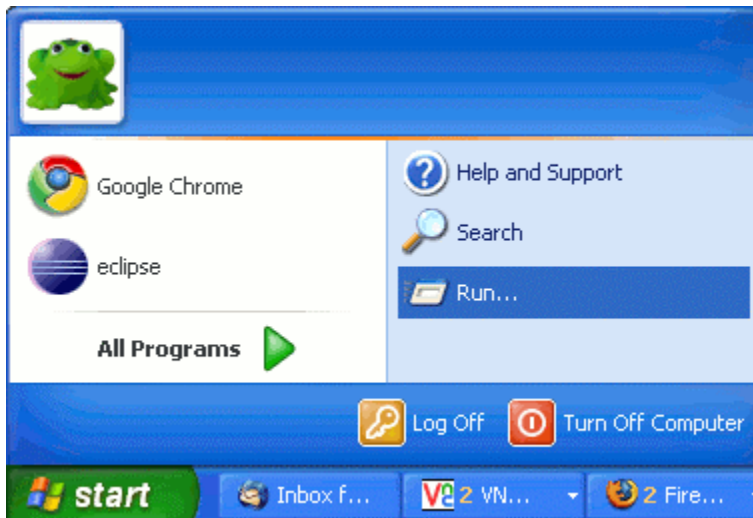
Java Virtual Machine Launcher - Could not find the main class. Program will exit.

Please follow the following instructions to solve the problem.

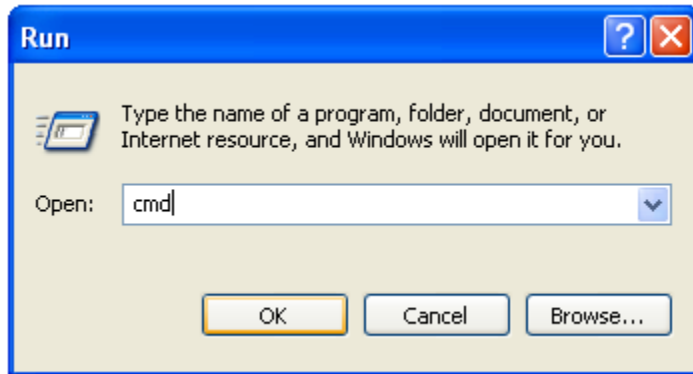
1. Unzip TXF Creator (e.g., TXF_Creator_1.3.1_Basic.zip) to **C:\Program Files**.



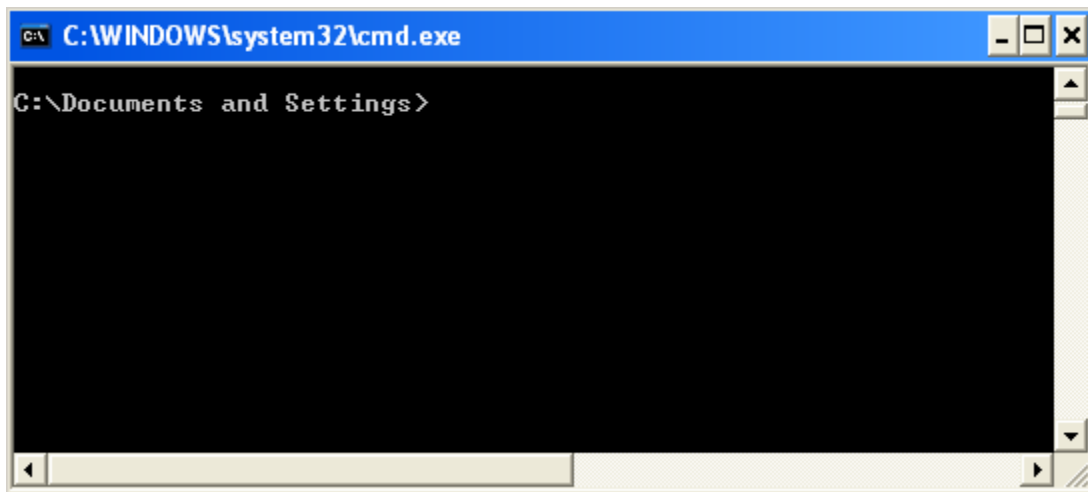
2. Click "Start" on the windows taskbar and then click "Run...".



3. Type **cmd** in the open text field and then click "OK".

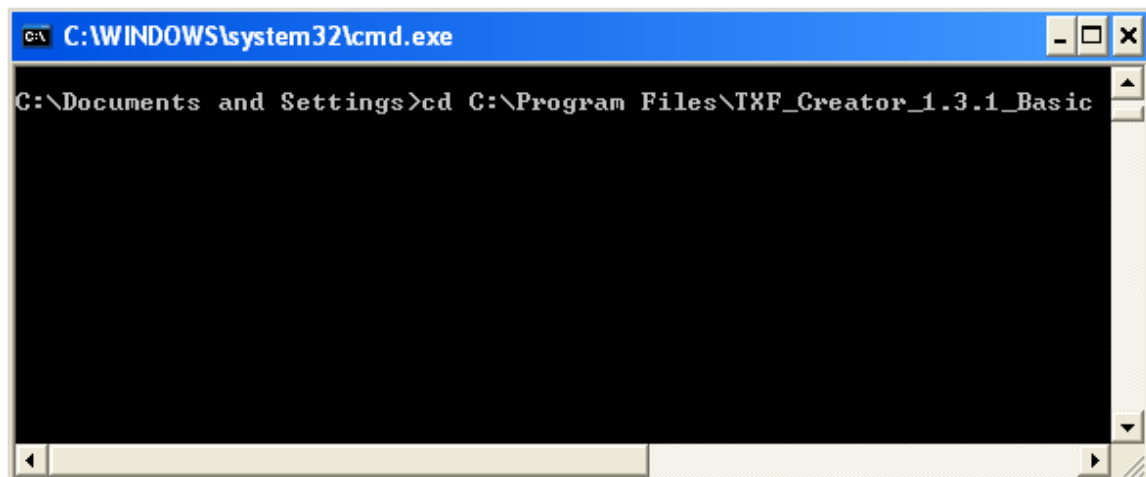


After clicking the **OK** button, you will see the windows command window below.



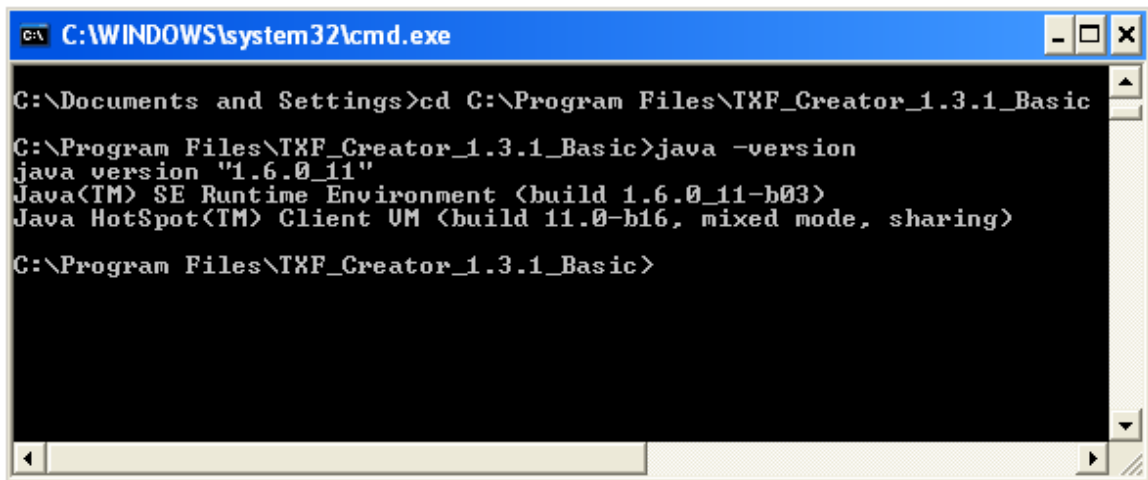
4. Switch to directory **C:\Program Files\TXF_Creator_1.3.1_Basic** by typing the following command.

cd C:\Program Files\TXF_Creator_1.3.1_Basic



5. Test **JDK 6** or **Java Runtime 6** by typing the following command.

java -version

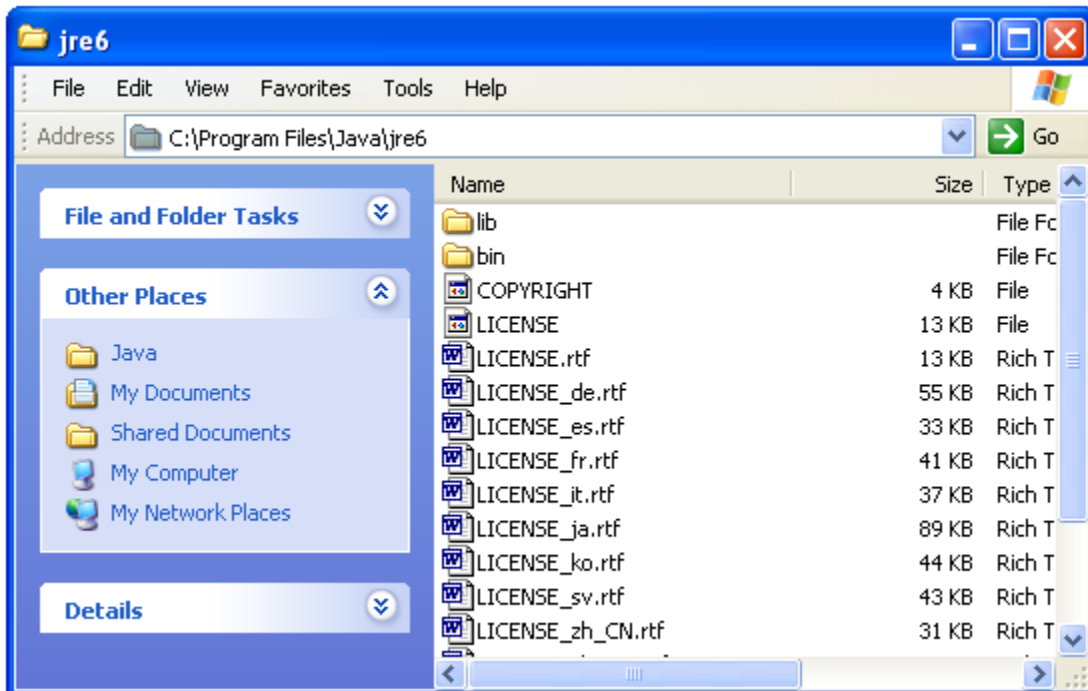


```
C:\WINDOWS\system32\cmd.exe
C:\Documents and Settings>cd C:\Program Files\TXF_Creator_1.3.1_Basic
C:\Program Files\TXF_Creator_1.3.1_Basic>java -version
java version "1.6.0_11"
Java(TM) SE Runtime Environment (build 1.6.0_11-b03)
Java HotSpot(TM) Client VM (build 11.0-b16, mixed mode, sharing)
C:\Program Files\TXF_Creator_1.3.1_Basic>
```

```
java version "1.6.0_11"
Java(TM) SE Runtime Environment (build 1.6.0_11-b03)
Java HotSpot(TM) Client VM (build 11.0-b16, mixed mode, sharing)
```

The above information means that you have correctly installed Java and you are ready to run TXF Creator.

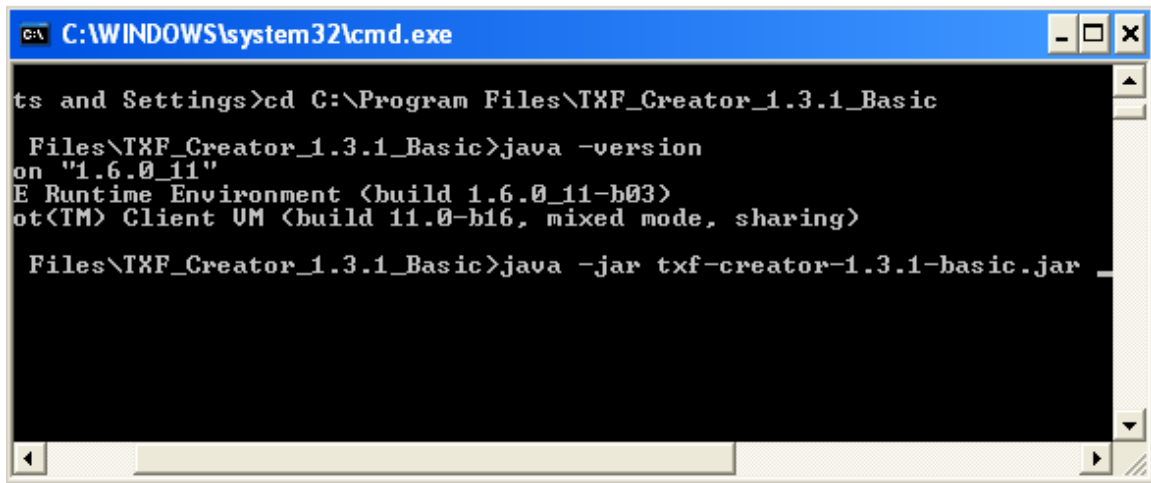
Please make sure that the installed Java has a version greater than 1.6. Otherwise, please visit <http://java.sun.com/javase/downloads/index.jsp> to download **Java SE Runtime Environment (JRE) 6 Update 11** and install JRE 6 on you computer. When installing JRE 6, you should choose all the default options. You should see directory **C:\Program Files\Java\jre6** after installation.



6. Run TXF Creator by double-clicking the batch file **run-basic.bat** in **C:\Program Files\TXF_Creator_1.3.1_Basic**.

You can also type the following command to start TXF Creator manually.

java -jar txf-creator-1.3.1-basic.jar



```
C:\WINDOWS\system32\cmd.exe
ts and Settings>cd C:\Program Files\TXF_Creator_1.3.1_Basic
Files\TXF_Creator_1.3.1_Basic>java -version
on "1.6.0_11"
E Runtime Environment (build 1.6.0_11-b03)
ot(TM) Client VM (build 11.0-b16, mixed mode, sharing)

Files\TXF_Creator_1.3.1_Basic>java -jar txf-creator-1.3.1-basic.jar
```

Please note if you downloaded **TXF Creator 1.3.1 Demo Application** or bought **TXF Creator 1.3.1 Standard Edition** or **TXF Creator 1.3.1 Unlimited Edition**, you should adjust the above instructions accordingly by replacing **basic** with **demo**, **standard**, and **unlimited** respectively.